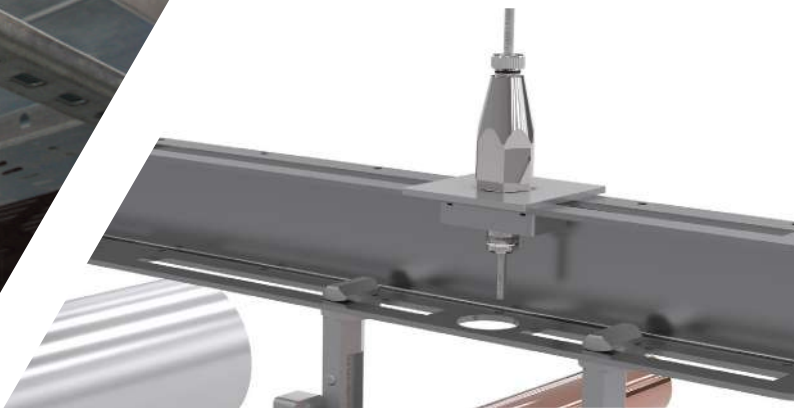
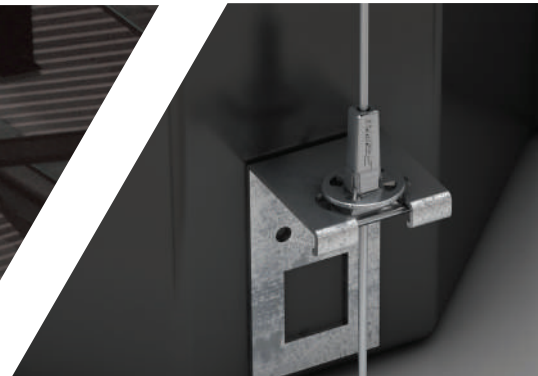
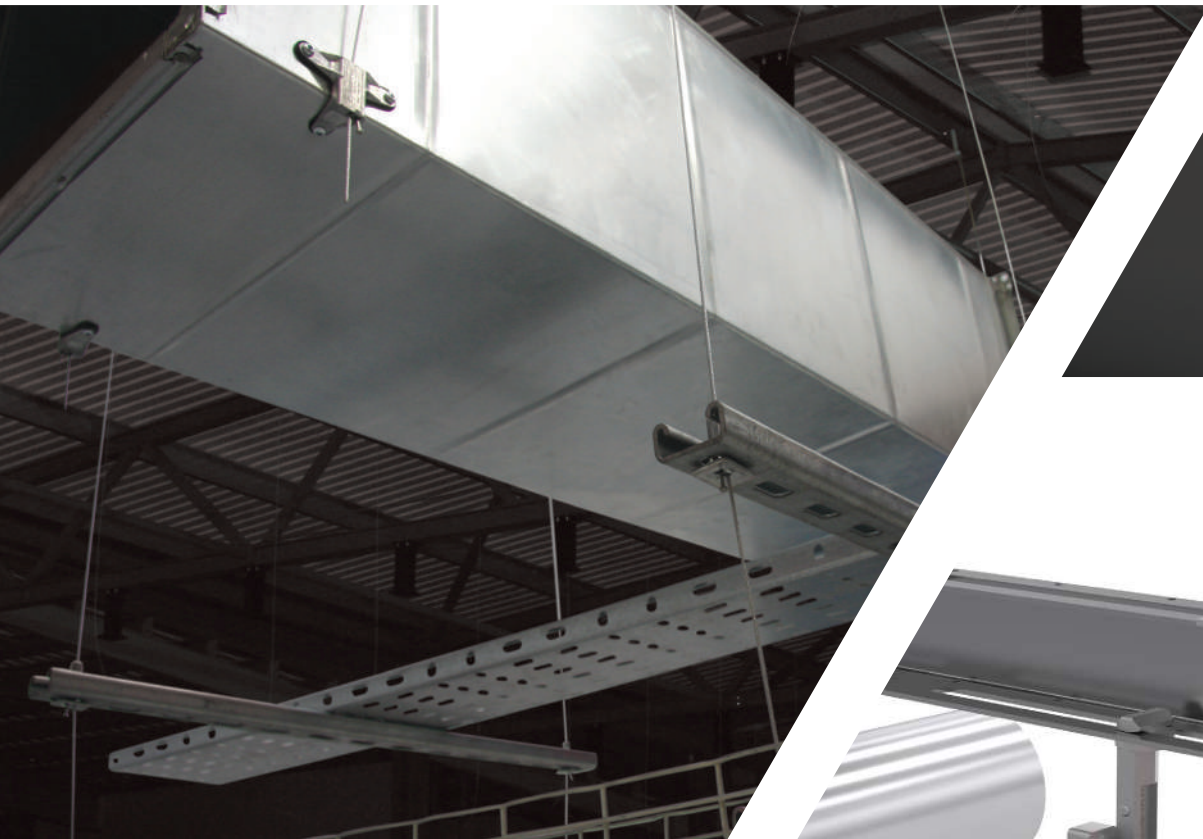




# The Trapeze Range

Suspension solutions for mechanical, electrical and HVAC services



- Cost saving
- Easy and efficient installation
- Versatile configurations

Butterfly  
Trapeze  
Page 8



Duct Trapeze  
Page 7



Trapeze Plus FR  
Page 6



Cable Basket  
Adaptor  
Page 10



Trapeze  
Page 4



**The Gripple® Trapeze** range has been developed for suspending a variety of services. The range is specifically designed to save you time, labour and money.

The Trapeze range of products are perfectly suited for the suspension of pipework, cable containment, ducting, air-conditioning units and many other applications, where fast, safe and efficient suspensions are required.

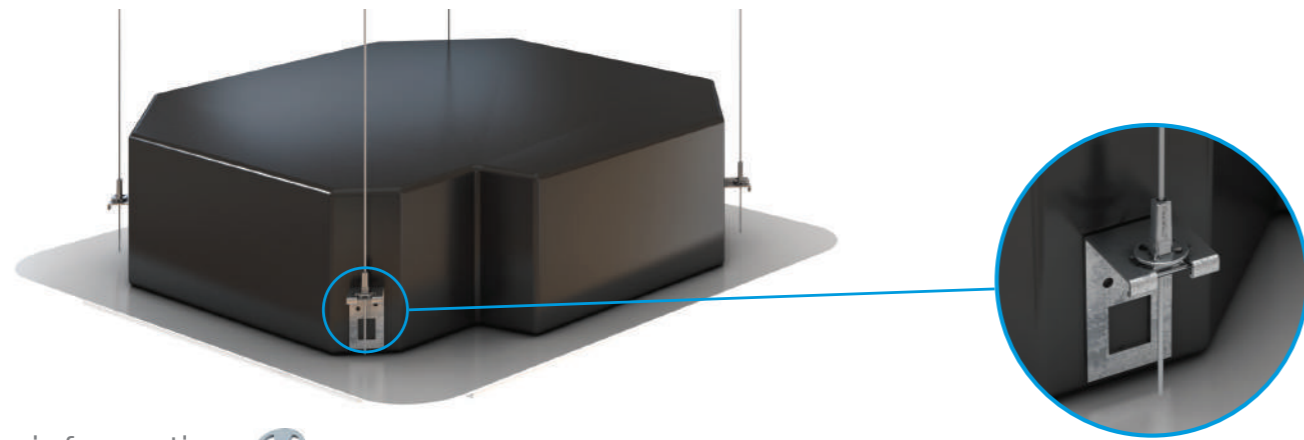
The Trapeze range is the perfect innovative and efficient replacement for traditional suspension methods such as threaded rod, being lighter and quicker without compromising on strength. Designed to suit a range of applications to provide you with a sleek, professional finish for you and your clients.



# Trapeze (TZ)

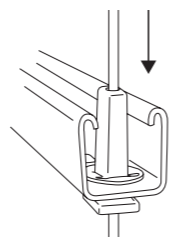
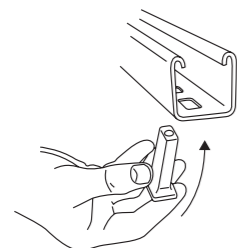
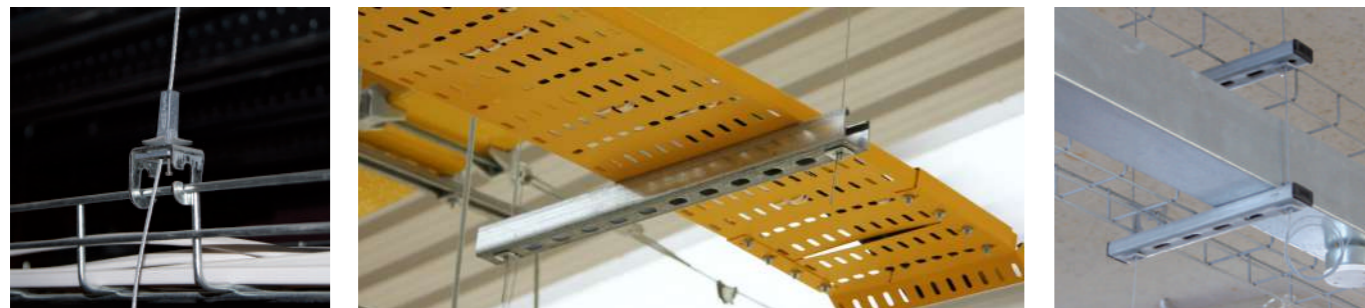
Ideal for single and multi-tiered suspension of mechanical, electrical and HVAC services

- Ideal for fast suspension of cable containment, pipework, air conditioning cassettes and chilled beams
- Tapered design; accommodates all slots sizes
- Discreet; fits completely inside the channel
- Pre-fits onto channel to ease working at height
- Aesthetic design
- Available as an accessory for multi-tiered installations
- Supplied as a ready-to-use kit with a wide range of end fixings
- Ideal for use with Gripple Pipe Bracket and QT Universal Clamp for mechanical installations
- Sizes available; No.2 45 kg, No.3 90 kg and No.4 225 kg with a 5:1 safety factor
- Also available in black (See page 9)



## Clip information

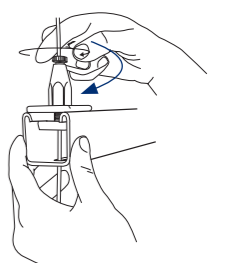
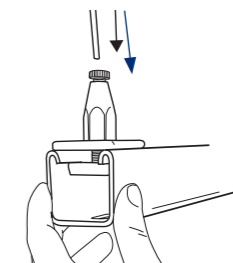
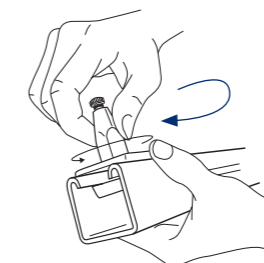
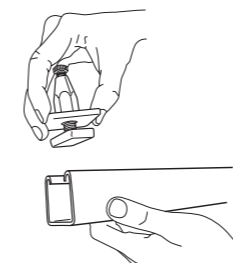
This clip pre-fits and holds the Trapeze onto the channel. In preparation for working at height, simply clip onto the Trapeze unit.



# Trapeze Plus (MTZ)

The all-steel Trapeze Plus is packed with features to make the suspension of building services even more secure and durable

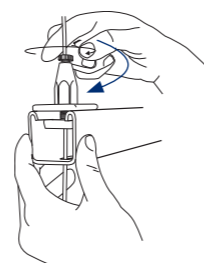
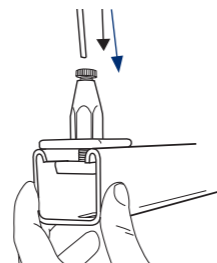
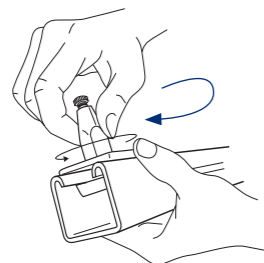
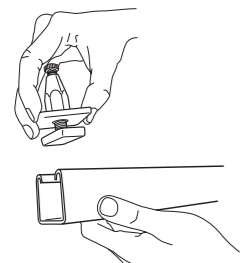
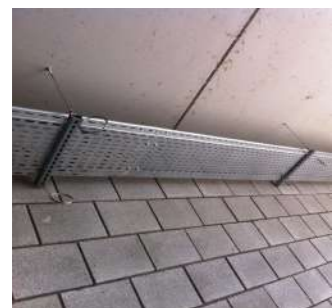
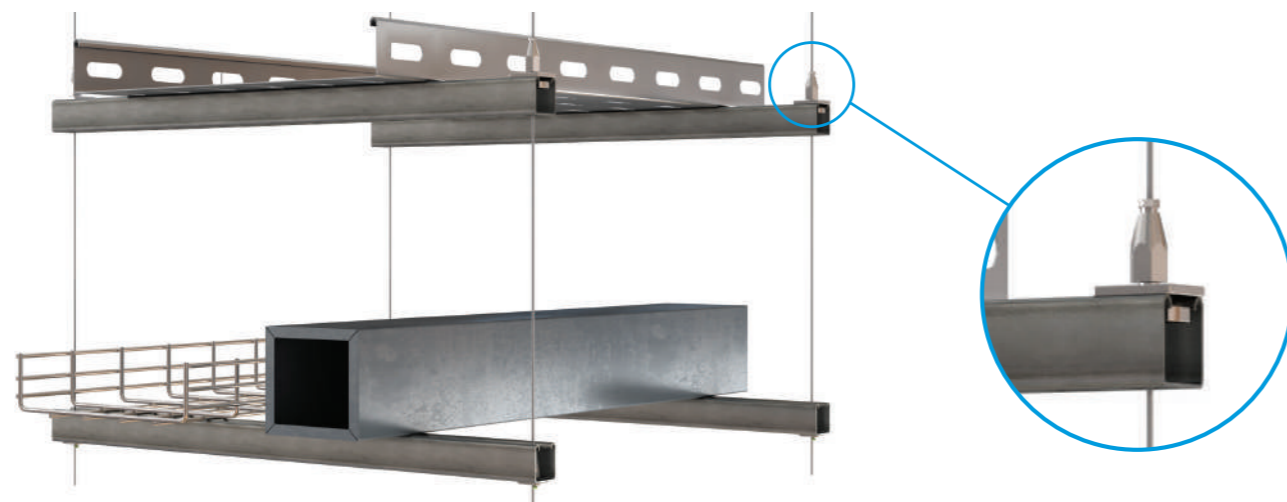
- Reduced time working at height; pre-install into channel using the washer/nut supplied
- Tool free setting
- Easy-to-use integral release button to allow finite adjustment
- Tighten the locking screw for ultimate security
- Channel can be multi-tiered to optimise space
- Full range of end fixings available
- Sizes available; No.2 45 kg, No.3 90 kg and No.4 225 kg with a 3:1 safety factor



# Trapeze Plus FR (MTZ3SS)

The all-steel Trapeze Plus Fire Rated is supplied with stainless steel wire for the suspension of services where fire resistance is required

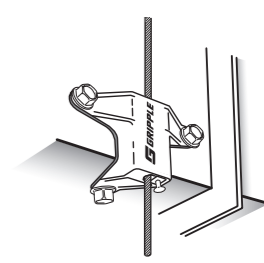
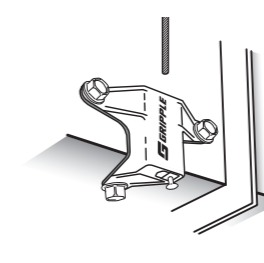
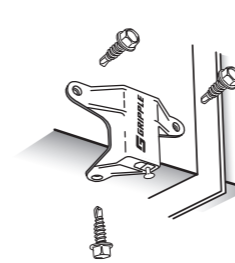
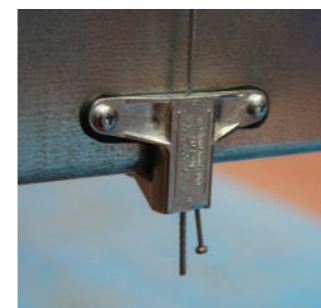
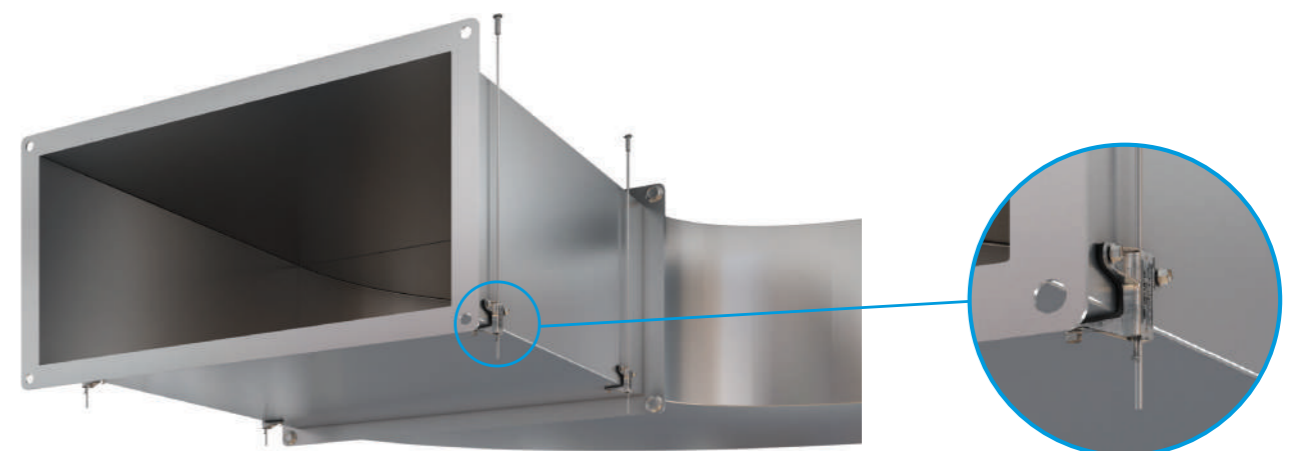
- Reduced time working at height; pre-install into channel using the washer/nut supplied
- Fire Rated: BRE Certified up to F120 in accordance with BS476 Part 20 / DIN4102 Part 2. Certification available with load limits and exposure times
- Tool free setting; easy-to-use integral adjustment button
- Tighten the locking screw for ultimate security
- Channel can be multi-tiered to optimise space
- Stud, Eyelet, 90° Eyelet end fixings available
- Supplied with Stainless Steel wire
- No.3 90 kg with a 3:1 safety factor



# Duct Trapeze (DT)

Ideal for fast suspension of rectangular ducting and attenuators

- Eliminates channel support
- Suitable for ducting made from 0.6 – 1.5 mm gauge steel
- Spreads the load across 3 fixing points, for self-drilling screws or pop rivets (not provided)
- Rubber pad prevents air leakage and dampens vibration
- Conforms to DW144 class C
- Pin allows rapid adjustment
- Load rated at 45 kg with a 5:1 safety factor
- Supplied as a ready-to-use kit

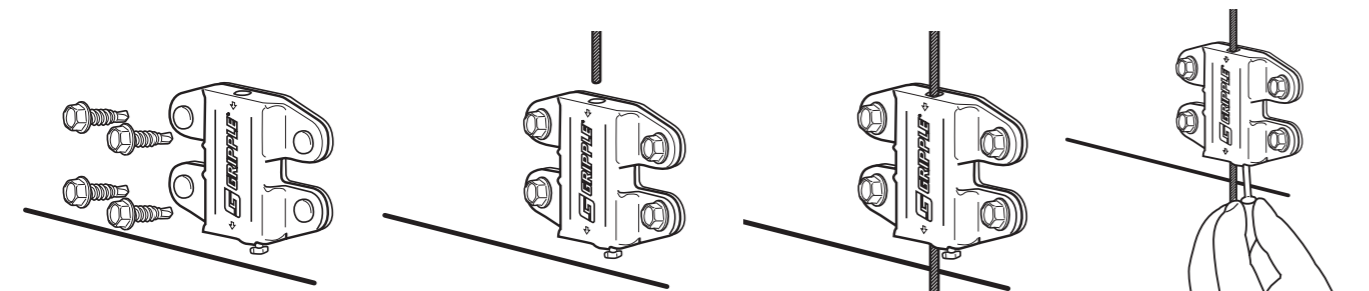
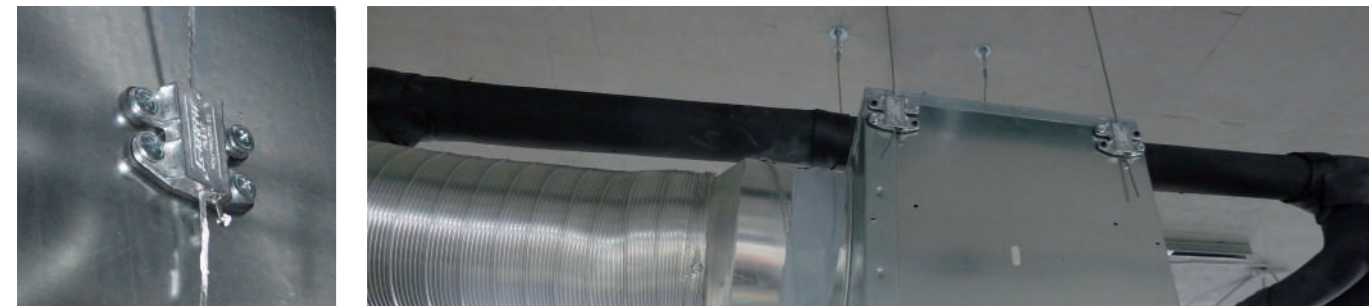
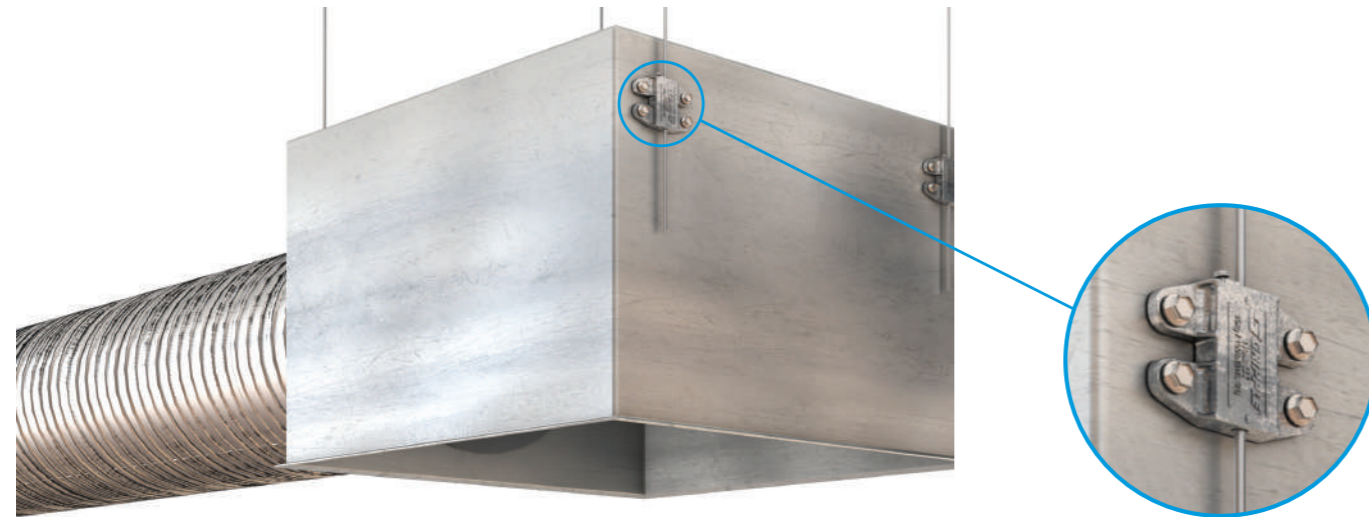




# Butterfly Trapeze (BT)

Designed to improve the installation of plenum boxes and duct work

- Ideal for applications where space is tight – e.g. plenum boxes or rectangular duct where access from below is required
- Simple vertical adjustment using the integral key prior to applying load
- Spreads the load across 4 fixing points
- Rubber pad prevents air leakage and dampens vibration
- Conforms to DW144 Class C
- Load rated at 45 kg with a 5:1 safety factor
- Can be used for multi-tiered installations
- Supplied as a ready-to-use kit
- Also available in black (See page 9)



# Accessories

Individual Trapeze products are available separately as an accessory to allow multi-tiered installations from one suspension wire

## Trapeze No. 2, 3 & 4

Combine Trapeze as an accessory with any Trapeze kit for multi-tiered installations.

Product code:  
TRAPEZE-NO2  
TRAPEZE-NO3  
TRAPEZE-NO4



## Trapeze Plus No. 2, 3 & 4

Combine Trapeze Plus as an accessory with any Trapeze kit for multi-tiered installations. Load rating of 45-225 kg with a 3:1 safety factor.

Product code:  
GRIPPLE2MM-TPZ-METAL  
GRIPPLE3MM-TPZ-METAL  
GRIPPLE4MM-TPZ-METAL



## Butterfly Trapeze

Ideal for use with light ductwork. Combine Butterfly Trapeze as an accessory with any Trapeze kit for multi-tiered installations. Maximum load rating of 45 kg with a 5:1 safety factor.

Product code:  
GRIPPLE2MMBFLY-TPZ



## Duct Trapeze

Ideal for use with rectangular ductwork. Combine Duct Trapeze as an accessory with any Trapeze kit for multi-tiered installations. Maximum load rating of 45 kg with a 5:1 safety factor.

Product code:  
DT2-ACC-PAD



# Black Line - Trapeze Range

Gripple's ready-to-use suspension kits now come with the option of a black finish to further enhance the aesthetic appeal of the range

The slim and unobtrusive aesthetics of Gripple's wire suspension system have always proved perfectly suited to the design of many modern buildings where building services in the roof space are left exposed and visible.



# Accessories

A variety of accessories are available to complement the Trapeze range increasing versatility and ease of installation



## Cable Basket Adapter

Designed for use with Trapeze No. 2 to suspend cable baskets up to 6 mm wire diameter. Ideal for quick and easy installation of multi-tiered cable baskets.

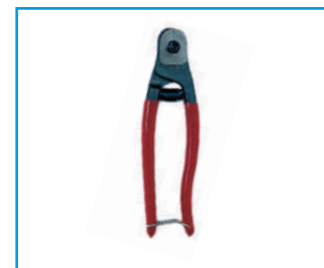
**Product code:**  
TZ2-ADP-CB6



## Spider

A cast-in-place concrete insert solution for hanging mechanical & electrical services.

Available with either a wire swivel or threaded attachment.



## Wire Cutters

Purpose-made for use on up to 4mm wire. For use when terminating wire lengths.

**Product code:**  
CUTTER-GRIPPLE



## MDI

A pre-insert solution for metal decks to suspend mechanical and electrical services.

Available with either a wire swivel or threaded attachment.



## Trapeze Bracket

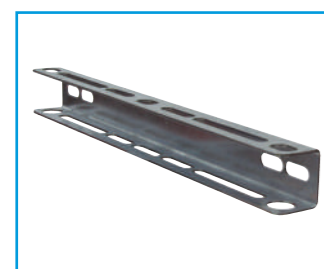
Combine with Trapeze No.2 and No.3 for easy attachment to rectangular ductwork. Maximum load rating of 45 kg (No.2), 90 kg (No.3) with a 5:1 safety factor.

**Product code:**  
TPZ-BRACKET



## Catenary & C-Clip

Catenary kits create secure, overhead spans by running high strength cable between two fixed points. The C-Clip is an innovative, twist-on device for hanging at any point along the Catenary wire with easy adjustment.



## Pipe Bracket

The Pipe Brackets are a strong and lightweight solution to the support of mechanical and electrical services when suspended using the Trapeze range of products.



## QT Universal Clamp

A quarter turn Universal Clamp for quick and easy support of pipe work. Up to 6 times faster than traditional methods and an ideal companion to the Trapeze and Pipe Bracket ranges.

# Product Codes

How to work out your unique product code:

1) Choose your kit type:  
(Input the code in the red area below)



2) Choose your end fixing:  
(Input the code in the green area below)



\* Stud available in M6, M8 or M10. Barrel available in M6 or M8. Please substitute the (\*) for the size required when ordering, e.g - S6G for an M6 Stud.

3) Choose your wire length:  
(Input the code in the blue area below)



4) Enter your unique product code:



Example code: **TZ2-S8G-2M** (Trapeze No.2 kit c/w M8 stud end fixing with 2 metres of wire)

For Black finished products add "BLK" to the end of the product code.

# www.gripple.com

info@gripple.com



## **Gripple Ltd (Headquarters)**

The Old West Gun Works  
Savile Street East  
Sheffield S4 7UQ  
UK

**T** | +44 (0) 800 018 4264

**F** | +44 (0) 114 275 1155

**E** | info@gripple.com

## **Gripple Inc**

1611 Emily Lane  
Aurora  
IL 60502  
USA

**T** | +1 866 474 7753

**F** | +1 800 654 0689

**E** | usinfo@gripple.com

## **Gripple Europe SARL**

1, rue du commerce  
BP 37  
67211 Obernai Cedex  
France

**T** | +33 (0)3 88 95 44 95

**F** | +33 (0)3 88 95 08 78

**E** | frinfo@gripple.com

## **Gripple India**

B 95/2  
Naraina Industrial Area  
Phase I  
New Delhi-110028

**T** | +91 11-40582703

**F** | +91 11-40582703

**E** | ininfo@gripple.com



WE ARE SOCIAL  
FOLLOW OUR UPDATES



© 2016 Gripple

*Gripple is a registered trademark of Gripple Limited.*

*Company registered in England No. 1772901, VAT Reg No. GB 600 1951 88*