



# Lighting Solutions

Complete suspension systems  
for all lighting applications



- Aesthetically pleasing
- Easy and efficient installation
- Complete off-site solutions

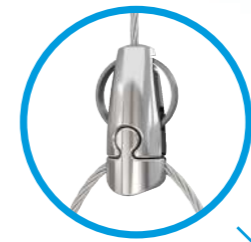
Standard Hanger  
Page 6



Express  
Page 5



Angel  
Page 4



**All Gripple®** suspension solutions are manufactured in the United Kingdom, and have been designed to save you time, money and labour by improving the efficiency of the installation process. Unlike traditional methods, Gripple kits require no on-site cutting, filing or hot works, so offer enormous health and safety benefits for your project.

**Our products** offer a sleek, professional and discreet finish, without compromising on strength; supplied in ready-to-use kits with your choice of end fixing and wire rope length.



Gripple suspension kits provide complete solutions for all lighting applications

Products shown only for internal use. Images shown for illustrative purposes only. Please refer to product installation instructions for full information.

# Angel (AL)

Our latest innovation, designed for architectural lighting suspensions where aesthetics are key.

- Simple one-handed operation for easy adjustment
- Contemporary design to complement the overall suspension
- Extensive range for use with most luminaires
- Suitable for loads up to 15 kg with a 5:1 safety factor, to accommodate a range of suspension requirements
- Supplied in convenient, ready-to-use kits in lengths up to 10 metres as standard
- Uses 1.5 mm wire rope to make the suspension as discreet as possible
- As standard, all kits come complete with the aesthetic 'Top Hat Barrel' ceiling fixing with M6 thread. Other ceiling fixings including Loops, Studs, Magnetic Pads are available on request



The latest innovation from Gripple

## End Fixings - Page 10

A wide selection of end fixing options to suit your application

## Accessories - Page 11

Additional products designed to help with your installation

# Express (XP)

The Express No.1 and No. 2 offer an instant locking system to make adjustment as simple as possible.

- The system incorporates an integral adjustment mechanism for convenience
- Up to 6 times faster to install than traditional methods
- Keyless operation
- Discreet and aesthetic design
- Express No. 1 load rated at 15 kg with a 5:1 safety factor
- Express No. 2 load rated at 45 kg with a 5:1 safety factor
- Supplied as a ready-to-use kit with a length of wire rope and end fixing of your choice



“Gripple kits helped us to complete the job on time, whilst also reducing our embodied carbon”

Site Supervisor, Gateway Primary Free School

## Installation System Design Service

Submit your drawings and our technical team will provide bespoke product specification based on your project requirements

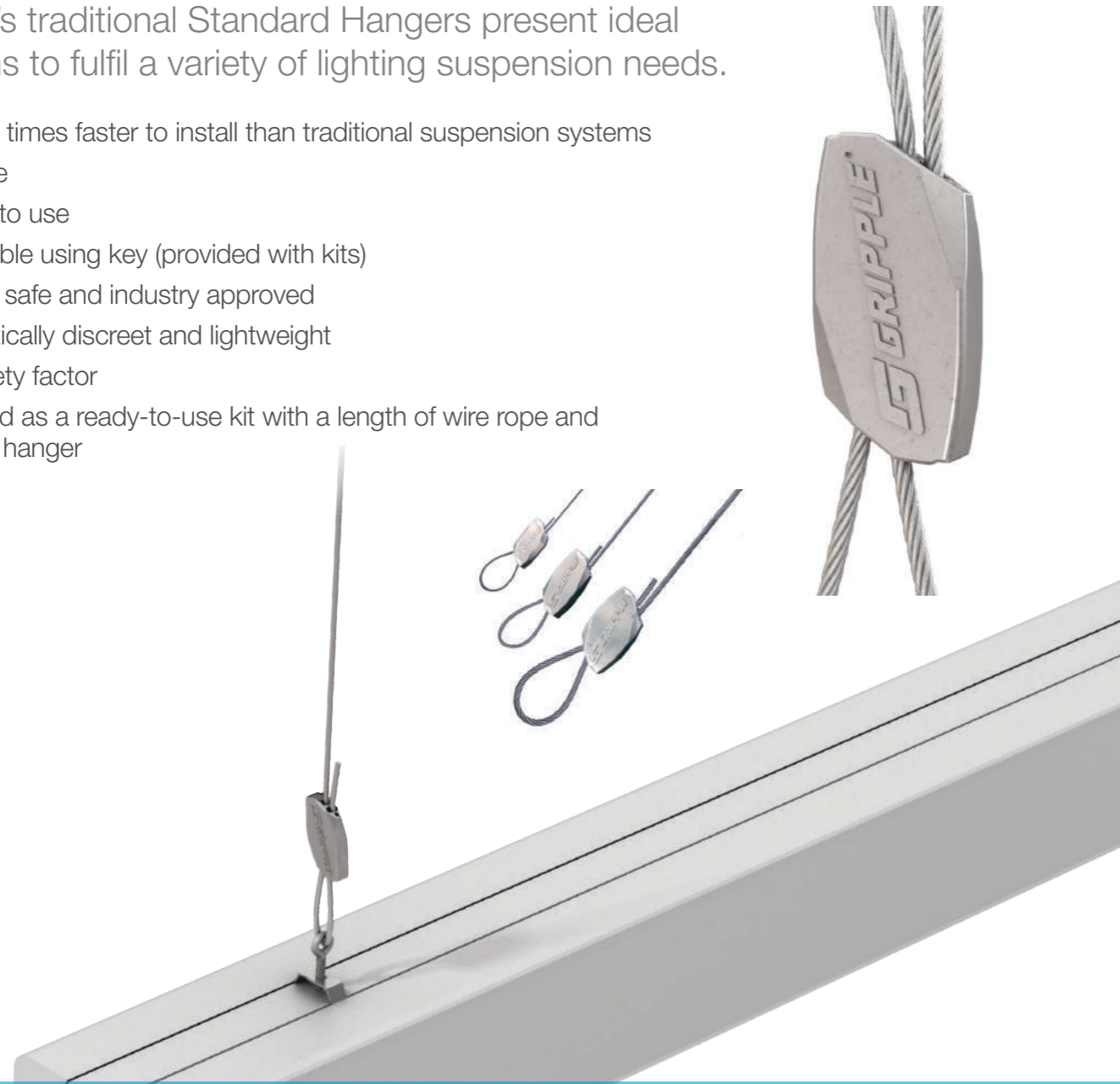
## Sales Enquiries

Call our friendly team on 0800 018 4264

# Standard Hanger (HF)

Gripple's traditional Standard Hangers present ideal solutions to fulfil a variety of lighting suspension needs.

- Up to 6 times faster to install than traditional suspension systems
- Versatile
- Simple to use
- Adjustable using key (provided with kits)
- Strong, safe and industry approved
- Aesthetically discreet and lightweight
- 5:1 safety factor
- Supplied as a ready-to-use kit with a length of wire rope and Gripple hanger



“The Gripple system is excellent in terms of cleanliness, time saving and safety”

Site Manager - Kershaw, Woodpecker Hall Primary School

# Catenary Kit and C-Clip

Create secure, overhead spans by running high strength wire rope between two fixing points. Ideal for applications where no direct vertical anchor point is available. The Gripple C-Clip, an innovative twist-on/off device, allows you to suspend your light from anywhere along the span.

- Visually discreet and lightweight
- Can be fitted retrospectively
- No tools needed to install
- Available in 3 mm and 6 mm wire rope diameters, for suspensions up to 100 kg per span
- C-Clip allows horizontal and vertical adjustment
- Cams lock solidly in place, even at angles up to 60°
- Ready-to-use kit supplied with a length of wire rope and Gripple hanger



“Gripple Catenary kits were quick to install and offer improved aesthetics”

Site Supervisor, B&Q, Bedford

## End Fixings - Page 10

A wide selection of end fixing options to suit your application

## Accessories - Page 11

Additional products designed to help with your installation

## Installation System Design Service

Submit your drawings and our technical team will provide bespoke product specification based on your project requirements

## Sales Enquiries

Call our friendly team on  
0800 018 4264

# Y-Fit and Y-Fit Accessory

Single hanger with dual suspension points, which improves stability and centre of gravity.

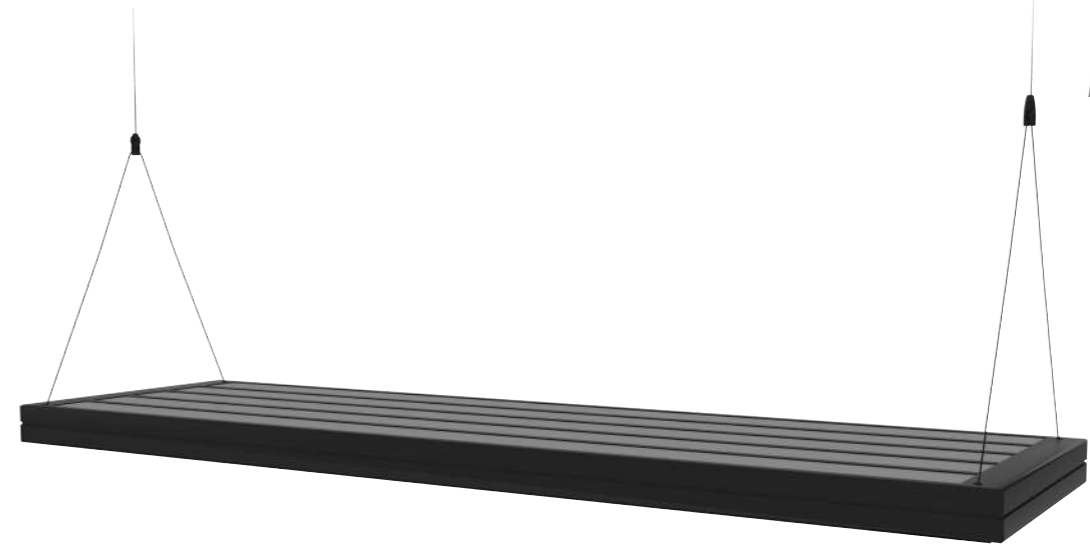
- Y-Fit is a one-piece suspension, ideal for shorter drop lengths
- Y-Fit Accessory is designed for use with a Standard Hanger kit, for longer drops and increased adjustment
- Ideal for luminaires
- Available with a range of end fixings, and leg lengths to suit your specification



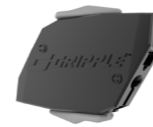
# Black Line

Gripple's ready-to-use suspension kits now come with the option of a black finish to further enhance the aesthetic appeal of the ranges.

The slim and unobtrusive aesthetics of Gripple's wire suspension system have always proved perfectly suited to the design of many modern buildings. To achieve the desired black finish hangers and wires are chemically blacked via a process of dipping the product through a variety of inert non-hazardous chemicals



XP1 / XP2



HF1 / 2 / 3



D3/6



Wire Rope



**“Very easy to install”**  
**“Ideal for use with a Gripple Catenary System”**

Contractor, Tesco, Leeds

Bright ideas don't always  
have to be visible

## End Fixings - Page 10

A wide selection of end fixing options to suit your application

## Accessories - Page 11

Additional products designed to help with your installation

## Installation System Design Service

Submit your drawings and our technical team will provide bespoke product specification based on your project requirements

## Sales Enquiries

Call our friendly team on  
0800 018 4264

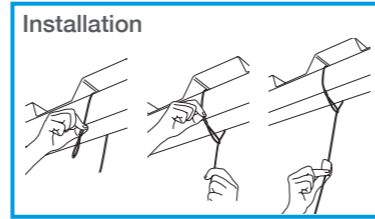
# End Fixings

All lighting kits are supplied with pre-crimped end fixings and your choice of wire rope length, suitable for installation into any substrate.



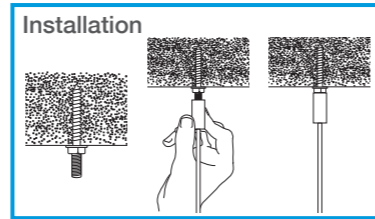
## Loop

- Ideal for looping around purlins, beams, roof trusses and other suitable building features
- Available up to 325 kg SWL, with a 5:1 safety factor
- Available in Stainless Steel



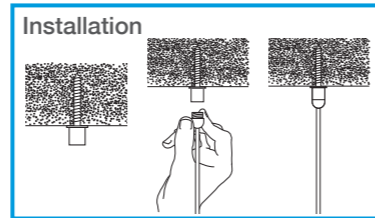
## Barrel

- Aesthetic fixing for use with any M6 or M8 threaded product
- Available up to 90 kg SWL, with a 5:1 safety factor



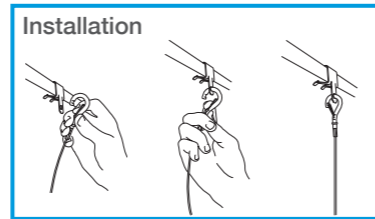
## Top Hat

- Aesthetic end fixing with M6 thread
- Available up to 45 kg SWL, with a 5:1 safety factor



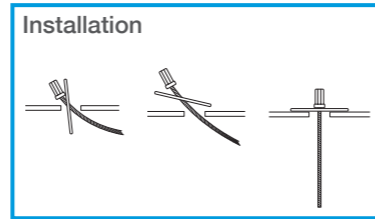
## Snap Hook

- Quick and easy attachment to cable basket, purlin clips, light fittings
- Available up to 90 kg SWL, with a 5:1 safety factor



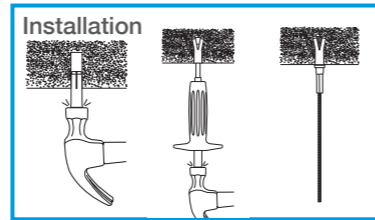
## Toggle

- Ideal for profile roof decking, light fittings and other pre-drilled structures
- Combines a plate and end stop to provide a simple fixing method
- A Toggle is an integral part of the wire rope, requiring no further accessories



## Stud

- Ideal for anchoring into concrete ceilings
- Supplied with a Drop-In Anchor
- Available up to 225 kg SWL, with a 5:1 safety factor
- Available in Stainless Steel



# Accessories

To complement the lighting product range.



## Wire Cutters

- For use when cutting wire to desired lengths
  - Purpose made for use on 4 mm wire max
  - Hardened jaws for durability
- Product code: CUTTER-GRIPPLE**



## Tensioning Tool

- For use with 6 mm catenaries
  - Tensions wire easily (up to 100 kg)
- Product code: CTI-6MM-TOOL**



## Twister

- Keeps tail wires neat and tidy
  - For use with 2 mm / 3 mm wire
  - Aesthetic finish
- Product code: TWIST-10BB**



## T-Bar Twist Clip

- Attaches to ceiling grid
  - For use with M6 Barrel end fixing
- Product code: T-BAR-CLIP-M6**



## Beam and Purlin Clips

- Available in a variety of sizes and models for attachment to beams and purlins
- Contact us for sizing and product code options



## Ceiling Fixing Kit

- Improves aesthetics
  - Suitable for suspended ceilings
  - Conceals the hanger installation
- Product code: CEILING-COVER**

## Product codes

How to work out your unique product code

(For a full list of product codes please visit our website or contact your sales representative).

1) Choose your kit type:

(Input the code in the red area below)



2) Choose your end fixing:

(Input the code in the green area below)



3) Choose your wire length:

(Input the code in the blue area below)

Bespoke lengths are available upon request.



4) Enter your unique product code:



For 3 mm Catenary kits use **CTI-3MM-XXM**, where "XX" is the required length. For 6 mm Catenary kits use **CTI-6MM-XXM**, where "XX" is the required length.

Both our 3 mm C-Clip and 6 mm C-Clip can be ordered as an end fixing, using CC3 and CC6 alongside a choice of kit respectively.

The Angel has a variety of connector types not listed above, please call 0800 0184 264 or visit our website [www.gripple.com](http://www.gripple.com) for further details.

# www.gripple.com

info@gripple.com



## **Gripple Ltd (Headquarters)**

The Old West Gun Works  
Savile Street East  
Sheffield S4 7UQ  
UK

**T** | +44 (0) 800 018 4264

**F** | +44 (0) 114 275 1155

**E** | info@gripple.com

## **Gripple Inc**

1611 Emily Lane  
Aurora  
IL 60502  
USA

**T** | +1 866 474 7753

**F** | +1 800 654 0689

**E** | usinfo@gripple.com

## **Gripple Europe SARL**

1, rue du commerce  
BP 37  
67211 Obernai Cedex  
France

**T** | +33 (0)3 88 95 44 95

**F** | +33 (0)3 88 95 08 78

**E** | frinfo@gripple.com

## **Gripple India**

B 95/2  
Naraina Industrial Area  
Phase I  
New Delhi-110028

**T** | +91 11-40582703

**F** | +91 11-40582703

**E** | ininfo@gripple.com



WE ARE SOCIAL  
FOLLOW OUR UPDATES



© 2016 Gripple

*Gripple is a registered trademark of Gripple Limited.*

*Company registered in England No. 1772901, VAT Reg No. GB 600 1951 88*