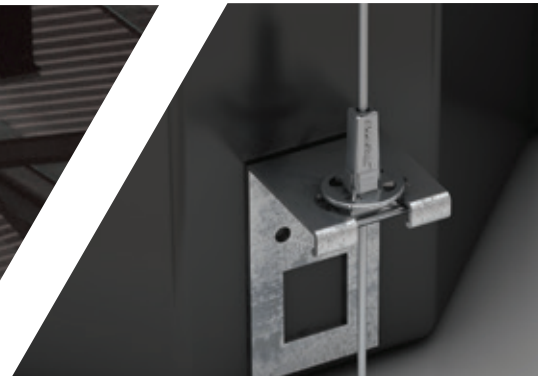


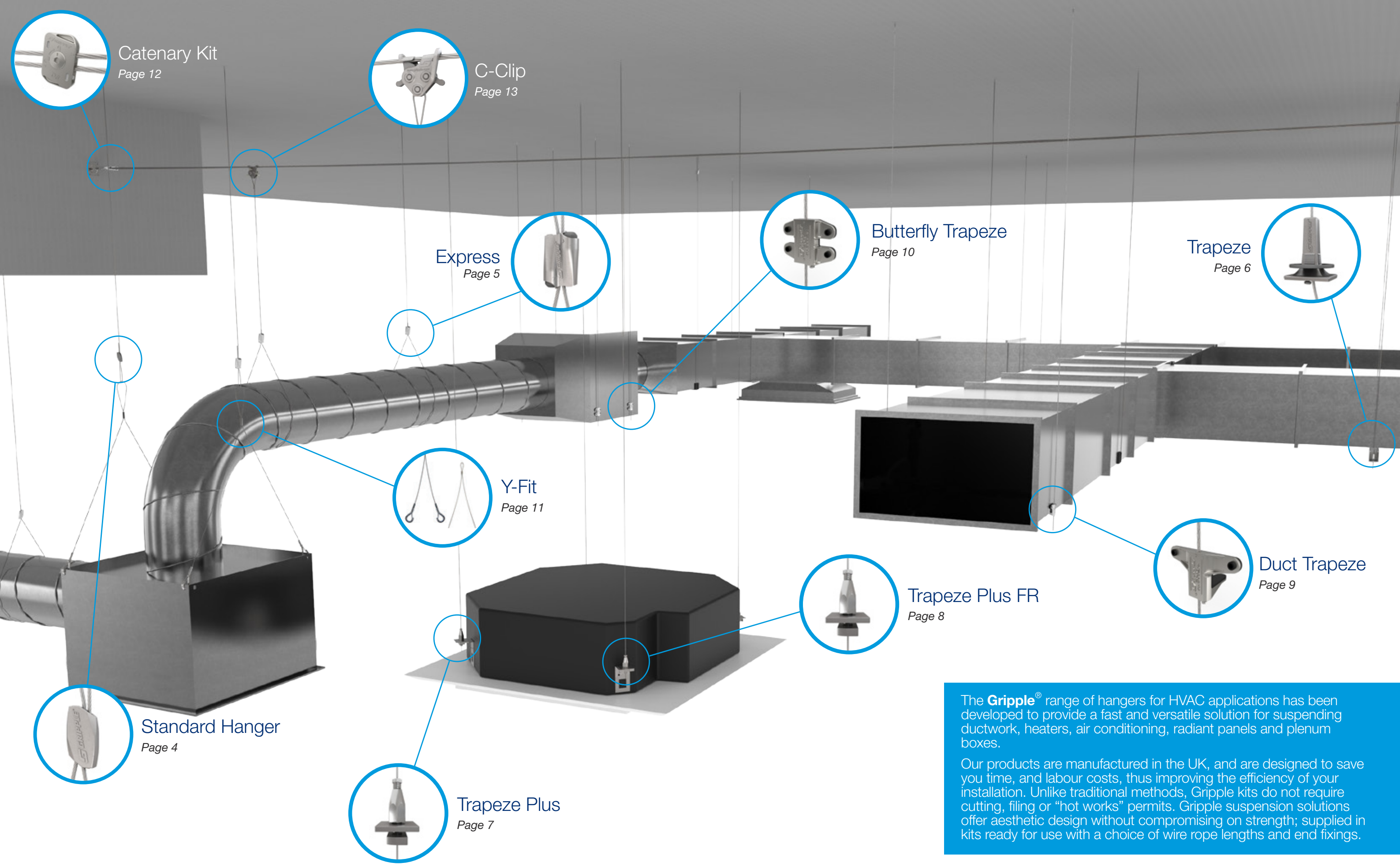


HVAC Solutions

For the comprehensive suspension of HVAC services



- Ready-to-use solutions
- Easy and efficient installation
- Versatile configurations



Catenary Kit
Page 12

C-Clip
Page 13

Express
Page 5

Butterfly Trapeze
Page 10

Trapeze
Page 6

Y-Fit
Page 11

Standard Hanger
Page 4

Trapeze Plus
Page 7

Trapeze Plus FR
Page 8

Duct Trapeze
Page 9

The **Gripple**® range of hangers for HVAC applications has been developed to provide a fast and versatile solution for suspending ductwork, heaters, air conditioning, radiant panels and plenum boxes.

Our products are manufactured in the UK, and are designed to save you time, and labour costs, thus improving the efficiency of your installation. Unlike traditional methods, Gripple kits do not require cutting, filing or "hot works" permits. Gripple suspension solutions offer aesthetic design without compromising on strength; supplied in kits ready for use with a choice of wire rope lengths and end fixings.

Standard Hanger (HF)

The Standard Hanger presents an ideal solution to fulfil a variety of HVAC suspension requirements.

- Up to 6 times faster to install than traditional suspension systems
- Versatile
- Simple to use
- Adjustable using key (provided with kits)
- Strong, safe and industry approved
- Load ratings up to 325 kg with a 5:1 safety factor
- Also available in black (see page 14 & 15)



All hangers are supplied as ready-to-use kits with a length of wire rope and end fixing of your choice.



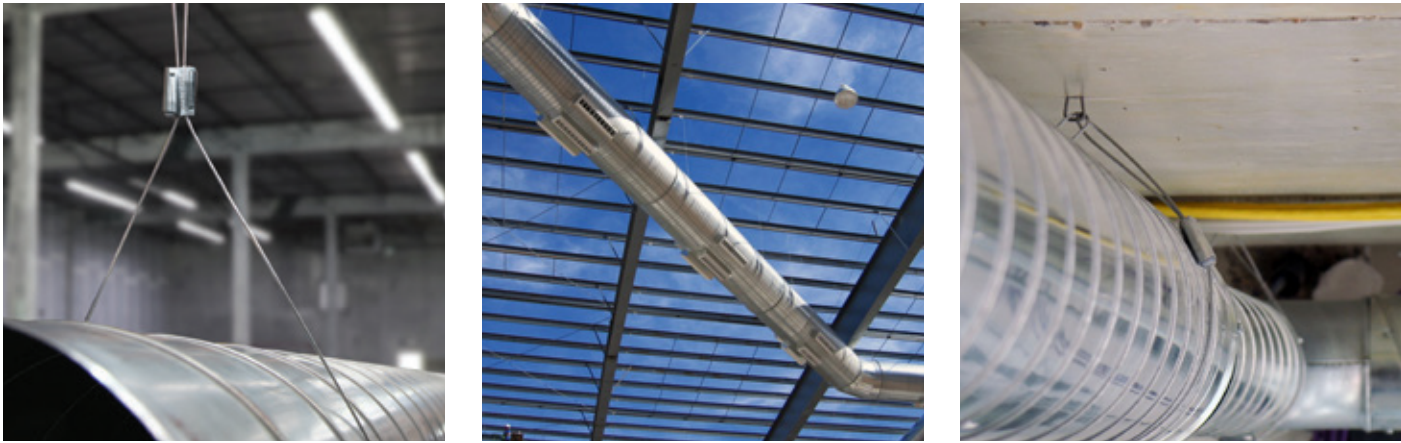
Express (XP)

The Express No. 2 offers an instant locking system to make adjustment even easier.

- The system incorporates an integral adjustment mechanism for convenience
- Up to 6 times faster to install than traditional methods
- Keyless operation
- Discreet and aesthetic design
- Express No. 2 load rated at 45 kg with a 5:1 safety factor
- Also available in black (see page 14 & 15)



All hangers are supplied as ready-to-use kits with a length of wire rope and end fixing of your choice.



“The Grippie system is excellent in terms of cleanliness, time saving and safety”

Site Manager - Kershaw, Woodpecker Hall Primary School

“Grippie kits helped us to complete the job on time, whilst also reducing our embodied carbon”

Site Supervisor, Gateway Primary Free School

End Fixings - Page 18

A wide selection of End Fixing options to suit your application requirements

Product Codes - Page 19

Standard product codes for ordering Kits and Wire Rope Hangers

Sales Enquiries

Call our friendly team on 0800 018 4264

Installation System Design Service

Submit your drawings and our technical team will provide bespoke product specification based on your project requirements

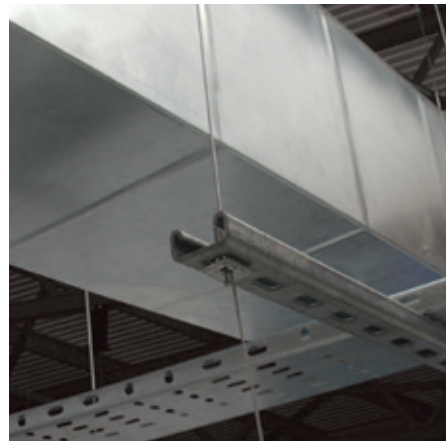
Trapeze (TZ)

Ideal for fast suspension of ductwork, air conditioning cassettes and chilled beams.

- Tapered design - accommodates all slots sizes
- Discreet - fits completely inside the channel
- Pre-fits onto channel to ease working at height
- Aesthetic design
- Available as an accessory for multi-tiered installations
- Ideal for use with Gripper Pipe Bracket and Gripper Universal Clamp for mechanical installations
- Sizes available; No.2 45 kg, No.3 90 kg and No.4 225 kg with a 5:1 safety factor
- Also available in black (see page 14 & 15)



All hangers are supplied as ready-to-use kits with a length of wire rope and end fixing of your choice.



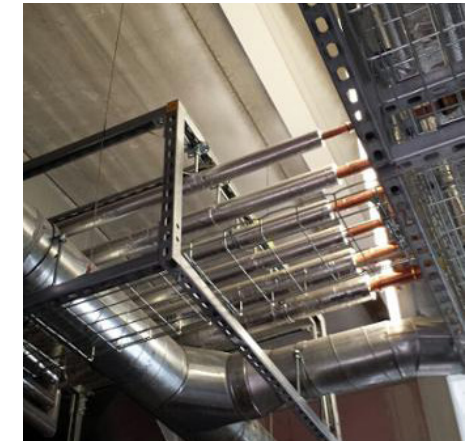
Trapeze Plus (MTZ)

The all-steel Trapeze Plus is packed with features to make channel suspension even more secure and durable.

- Reduced time working at height: pre-install into channel using the washer/ nut supplied
- Tool free setting
- Easy-to-use integral release button to allow finite adjustment
- Tighten the locking screw for ultimate security
- Channel can be multi-tiered to optimise space
- Full range of end fixings available
- Sizes available; No.2 45 kg, No.3 90 kg and No.4 225 kg with a 3:1 safety factor



All hangers are supplied as ready-to-use kits with a length of wire rope and end fixing of your choice.



“Gripper kits not only complement the architecture of a building but are also installed quickly and efficiently”

Contracts Engineer - Weavers Triangle

“Less material on site and fewer deliveries reduces the CO₂ and helps the BREEAM rating”

Project Engineer, Kershaws - Flitwick Leisure Centre

End Fixings - Page 18

A wide selection of End Fixing options to suit your application requirements

Product Codes - Page 19

Standard product codes for ordering Kits and Wire Rope Hangers

Sales Enquiries

Call our friendly team on 0800 018 4264

Installation System Design Service

Submit your drawings and our technical team will provide bespoke product specification based on your project requirements

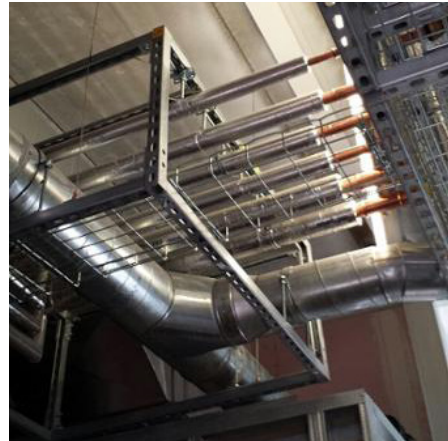
Trapeze Plus FR (MTZSS)

The all-steel Trapeze Plus FR is supplied with stainless steel wire for the suspension of services where fire resistance is required.

- Reduced time working at height: pre-install into channel using the washer/ nut supplied
- Fire Rated: BRE Certified up to F120 in accordance with BS476
- Part 20 / DIN4102 Part 2. Certification available with load limits and exposure times
- Tool free setting: easy-to-use integral adjustment button
- Tighten the locking screw for ultimate security
- Channel can be multi-tiered to optimise space
- Stud, Eyelet, 90° Eyelet end fixings available
- Supplied with Stainless Steel wire
- No.3 90 kg with a 3:1 safety factor



All hangers are supplied as ready-to-use kits with a length of wire rope and end fixing of your choice.



Duct Trapeze (DT)

Purpose-made single channel, ideal for fast suspension of rectangular ducting.

- Eliminates channel support
- Suitable for ducting made from 0.6 – 1.5 mm gauge steel
- Spreads the load across 3 fixing points, for self-drilling screws or pop rivets (not provided)
- Rubber pad prevents leakage
- Conforms to DW144 class C
- Pin allows rapid adjustment
- Load rated at 45 kg with a 5:1 safety factor
- Also available in black (see page 14 & 15)



All hangers are supplied as ready-to-use kits with a length of wire rope and end fixing of your choice.



“We have found Gripple to be quick and easy to assemble all manner of M&E services, it has proven to be strong, reliable, versatile and aesthetically pleasing”

Site Manager, Willmott Dixon

“The ductwork looks great. I would be happy to use the Duct Trapeze or other Gripple products in the future”

Project Manager, MS Ventilation

End Fixings - Page 18

A wide selection of End Fixing options to suit your application requirements

Product Codes - Page 19

Standard product codes for ordering Kits and Wire Rope Hangers

Sales Enquiries

Call our friendly team on 0800 018 4264

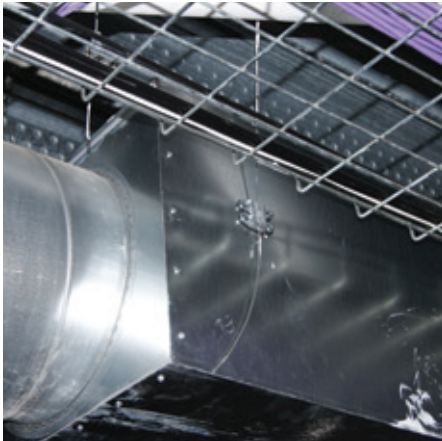
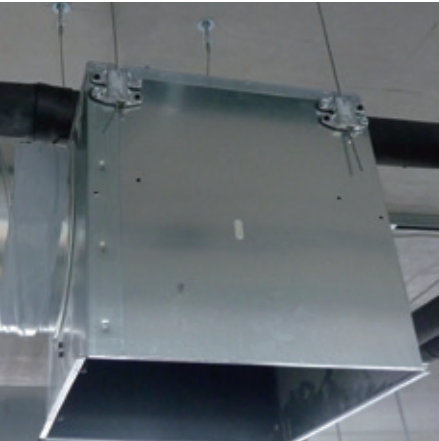
Installation System Design Service

Submit your drawings and our technical team will provide bespoke product specification based on your project requirements

Butterfly Trapeze (BT)

Designed to improve the installation of plenum boxes and small ductwork.

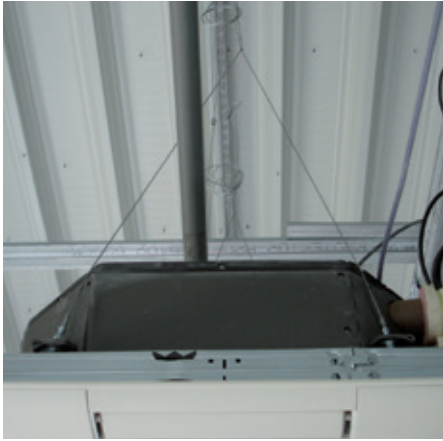
- Ideal for applications where space is tight – e.g. Plenum boxes or rectangular duct where access from below is required
- Simple vertical adjustment using the integral key prior to applying load
- Spreads the load across 4 fixing points
- Rubber pad prevents air leakage and dampens vibration
- Conforms to DW144 Class C
- Load rated at 45 kg with a 5:1 safety factor
- Can be used for multi-tiered installations
- Supplied as a ready-to-use kit
- Also available in black (see page 14 & 15)



Y-Fit and Y-Fit Accessory

Single hanger with dual suspension points, which improves stability and centre of gravity.

- Y-Fit is a one piece suspension, ideal for shorter drop lengths
- Y-Fit Accessory is designed for use with a Standard Hanger or Express for longer drops and increased adjustment
- Ideal for plenum boxes and radiant panels
- Available with a range of end fixings, and leg lengths to suit your specification



**“The schedule was tight, but Gripple products are quick, simple and easy to install.
We made a labour saving of six weeks on the installation of the ducting”**

Director, Renewable Energy Wales

“Very easy to install”

Contractor, Tesco, Leeds

End Fixings - Page 18
A wide selection of End Fixing options to suit your application requirements

Product Codes - Page 19
Standard product codes for ordering Kits and Wire Rope Hangers

Sales Enquiries
Call our friendly team on 0800 018 4264

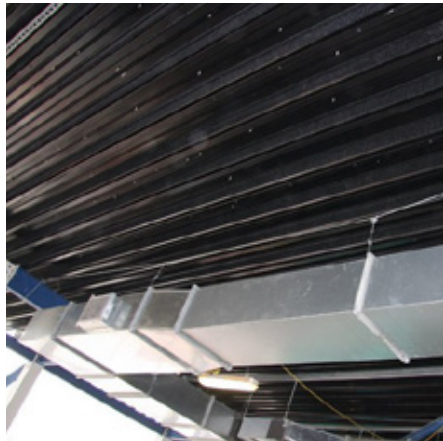
Installation System Design Service
Submit your drawings and our technical team will provide bespoke product specification based on your project requirements

Catenary Kit

Designed specifically for installations where no ceiling fixing point is available, or alternatively, in bracing applications.

Available in ‘light duty’ and ‘heavy duty’ options:-

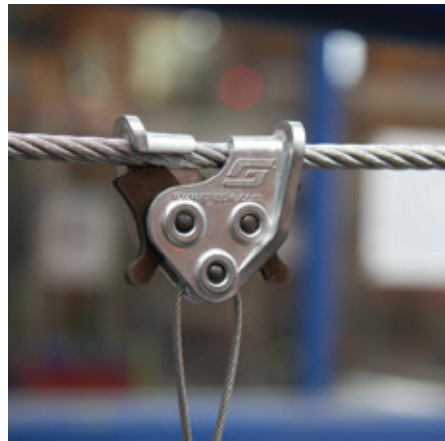
- The light duty 3 mm Catenary solution is ideal for suspending lightweight ductwork – up to 30 kg per span
- The heavy duty 6 mm Catenary solution is perfect for suspending M&E or HVAC services, or where a long Catenary is required – up to 100 kg per span
- Supplied as complete, ready-to-use kits, including galvanised wire rope cut to bespoke lengths, a hex locking key and release key
- Fast installation, reducing time spent working at height
- Locking mechanisms in the Gripple fastener to prevent dynamic movements
- Visually discreet
- Easily tensioned using the Gripple Catenary tensioning tool (6 mm only)



C-Clip

An innovative, twist-on device for hanging anywhere along catenary wires, the Gripple C-Clip can be fitted retrospectively, and offers complete control of both vertical and horizontal positioning.

- Up to 6 times faster to install than traditional suspension systems
- Versatile
- Simple to use
- Adjustable using key (provided with kits)
- Strong, safe and industry approved
- Load ratings up to 325 kg with a 5:1 safety factor
- Supplied in ready-to-use kits with a choice of wire lengths and end fixings
- Also available in black (see page 14 & 15))



“Catenary kits are not only quicker to install than spanning purlins with rod and strut, but are more aesthetically appealing to our clients”

Site Supervisor, Pitts Wilson

“The Catenary system saved time and labour as we didn’t need to create bracing between the purlins in order to suspend the services”

Mechanical Engineer, Balfour Beatty

End Fixings - Page 18

A wide selection of End Fixing options to suit your application requirements

Product Codes - Page 19

Standard product codes for ordering Kits and Wire Rope Hangers

Sales Enquiries

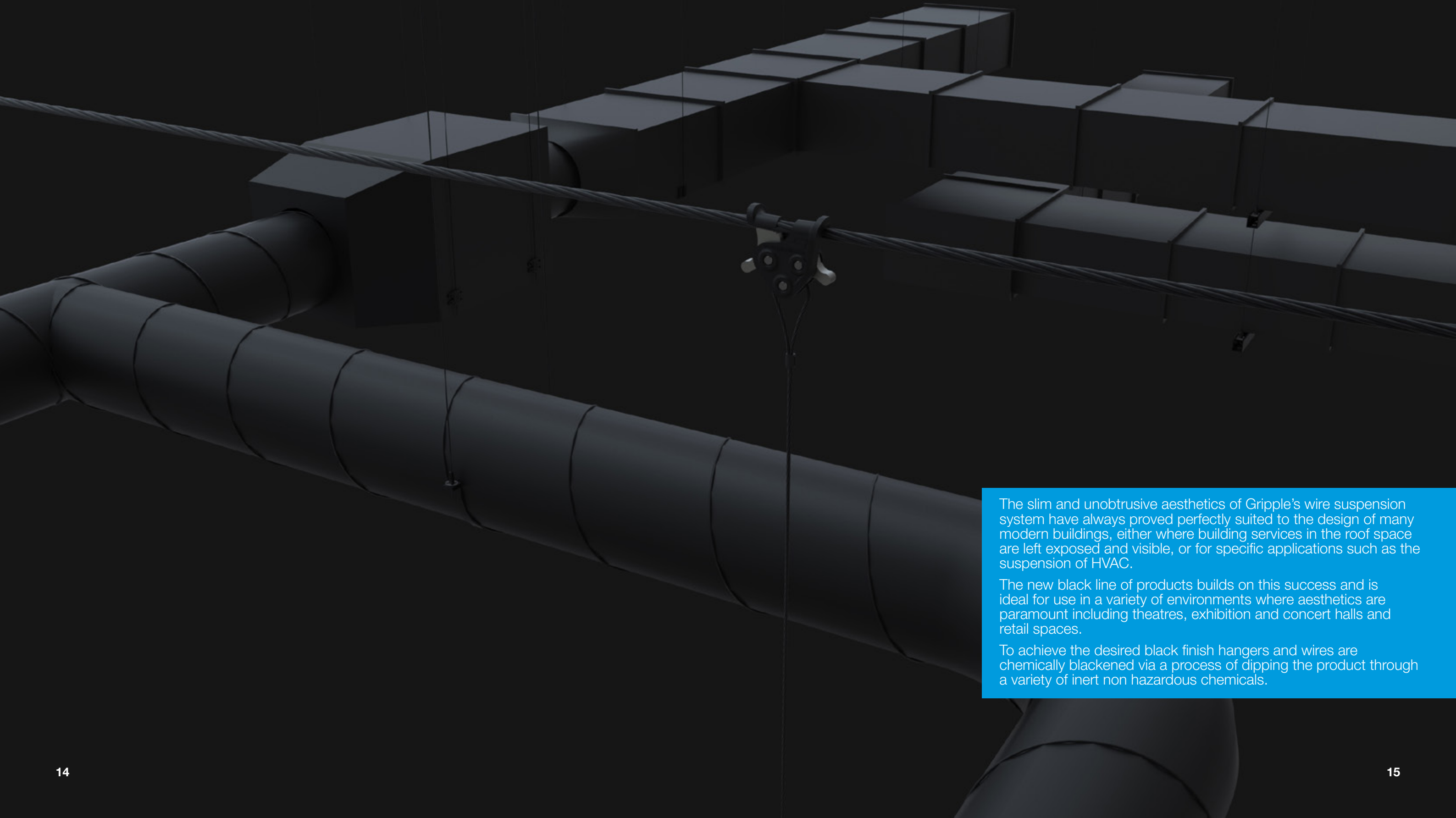
Call our friendly team on 0800 018 4264

Installation System Design Service

Submit your drawings and our technical team will provide bespoke product specification based on your project requirements

Black Line

Gripple's ready-to-use suspension kits now come with the option of a black finish to further enhance the aesthetic appeal of the range.



The slim and unobtrusive aesthetics of Gripple's wire suspension system have always proved perfectly suited to the design of many modern buildings, either where building services in the roof space are left exposed and visible, or for specific applications such as the suspension of HVAC.

The new black line of products builds on this success and is ideal for use in a variety of environments where aesthetics are paramount including theatres, exhibition and concert halls and retail spaces.

To achieve the desired black finish hangers and wires are chemically blackened via a process of dipping the product through a variety of inert non hazardous chemicals.

Accessories

Individual Trapeze products are available separately as an accessory to allow multi-tiered installations from one suspension wire.



Trapeze No. 2
Combine Trapeze as an accessory with any Trapeze kit for multi-tiered installations. Load rating of 45 kg with a 3:1 safety factor.
Product code: TRAPEZE-NO2



Trapeze No. 3
Combine Trapeze as an accessory with any Trapeze kit for multi-tiered installations. Load rating of 90 kg with a 3:1 safety factor.
Product code: TRAPEZE-NO3



Trapeze No. 4
Combine Trapeze as an accessory with any Trapeze kit for multi-tiered installations. Load rating of 225 kg with a 3:1 safety factor.
Product code: TRAPEZE-NO4



Trapeze Plus No. 2
Combine Trapeze Plus as an accessory with any Trapeze kit for multi-tiered installations. Load rating of 45 kg with a 3:1 safety factor.
Product code: GRIPPLE2MM-TPZ-METAL



Trapeze Plus No. 3
Combine Trapeze Plus as an accessory with any Trapeze kit for multi-tiered installations. Load rating of 90 kg with a 3:1 safety factor.
Product code: GRIPPLE3MM-TPZ-METAL



Trapeze Plus No. 4
Combine Trapeze Plus as an accessory with any Trapeze kit for multi-tiered installations. Load rating of 225 kg with a 3:1 safety factor.
Product code: GRIPPLE4MM-TPZ-METAL



Butterfly Trapeze
Ideal for use with light ductwork. Combine Butterfly Trapeze as an accessory with any Trapeze kit for multi-tiered installations. Maximum load rating of 45 kg with a 5:1 safety factor.
Product code: GRIPPLE2MMBFLY-TPZ



Duct Trapeze
Ideal for use with rectangular ductwork. Combine Duct Trapeze as an accessory with any Trapeze kit for multi-tiered installations. Maximum load rating of 45 kg with a 5:1 safety factor.
Product code: DT2-ACC-PAD



Thru-In-1®
Patented SDS+ drill bit and sleeve technology that simplifies the passing of cable or piping through cavity walls. Available in 22 mm and 28 mm starter packs.
**Product code: TI1-22-STARTER
TI1-28-STARTER**



Low Profile Bracket
A strong lightweight solution designed to be bolted to the soffit as a header rail for suspending services using the QT End Fixing. Range of lengths available on request. (Available 2016)



Spider
A cast-in-place concrete insert solution for hanging mechanical & electrical services. Available with either a wire swivel or threaded attachment.



MDI
A pre-insert solution for metal decks to suspend mechanical and electrical services. Available with either a wire swivel or threaded attachment.



Universal Clamp
Ideal for the quick and easy support of spiral ductwork. Up to 6 times faster than traditional methods.



Trapeze Bracket
Combine with Trapeze No.2 and No.3 for easy attachment to rectangular ductwork. Maximum load rating of 45 kg (No.2), 90 kg (No.3) with a 5:1 safety factor.



Beam and Purlin Clips
Available in a variety of sizes and models for attachment to beams and purlins.



Twister
Keeps tail wires neat and tidy. For use with 2 mm and 3 mm wire rope.



Corner Saddle
Right-angled moulding protects against wire friction. Available in standard and magnetic versions, for easy positioning and installation.



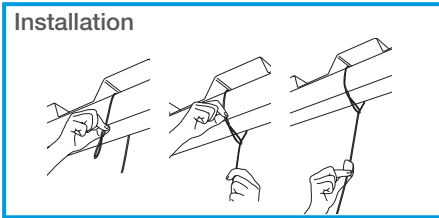
Wire Cutters
Purpose-made for use on up to 4mm wire. For use when terminating wire lengths.

End Fixings

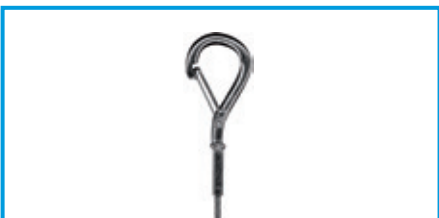
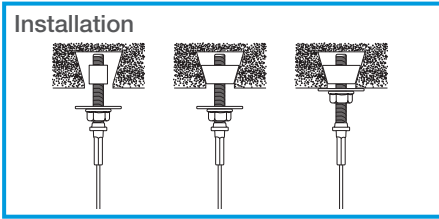
All Gripple hanger kits are supplied with pre-crimped end fixings and your choice of wire rope length, suitable for installation into any substrate.



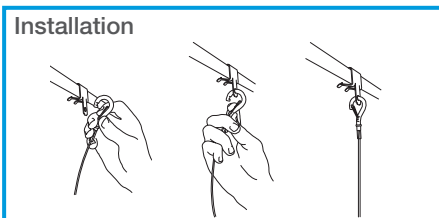
- Loop**
- Ideal for looping around purlins, beams, roof trusses and other suitable building features
 - Available up to 325 kg SWL, with a 5:1 safety factor
 - Available in Stainless Steel



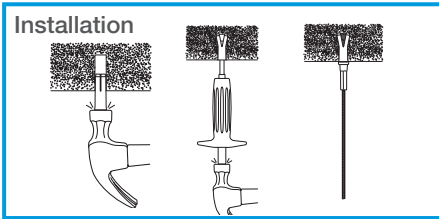
- 25 mm Wedge**
- Ideal for fixing into the re-entrant channel of several composite floor deckings (R51, CF51, Holorib, MD50 and MF55)
 - Available up to 90 kg SWL, with a 3:1 safety factor
 - Ready-to-use kit with wire and Hanger



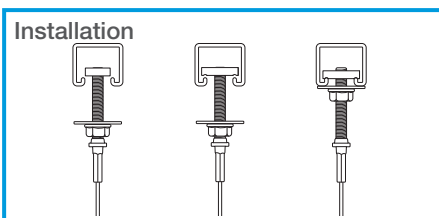
- Snap Hook**
- Quick and easy attachment to cable basket, purlin clips, light fittings
 - Available in Gripple sizes No.2 and No.3 up to 90 kg SWL, with a 5:1 safety factor



- Stud**
- Ideal for anchoring into concrete ceilings and Channel Nuts
 - Supplied with a Drop-In Anchor
 - Available up to 225 kg SWL, with a 5:1 safety factor
 - Available in Stainless Steel



- Channel Nut**
- Designed for fixing directly into Channel
 - Available in Gripple sizes No.2 and No.3
 - Comes as a ready-to-use kit with wire and Hanger



Other End Fixings are available. Contact our technical team for details.

Product Codes

How to work out your unique product code:

1) Choose your kit type:
(Input the code in the red area below)

Standard Hanger HF1, HF2 & HF3	Express XP2	Trapeze TZ2, TZ3, TZ4	Trapeze Plus MTZ2, MTZ3, MTZ4	Trapeze Plus FR MTZ3SS	Duct Trapeze DT2	Butterfly Trapeze BT2

2) Choose your end fixing:
(Input the code in the green area below)

Loop LG	Stud* S*G	Barrel* B*G	Toggle TG	Snap Hook HG	Eyelet EY6G	90° Eyelet EY906G	Channel Nut CN8G
6 mm C-Clip CC6	Cladding Hook CHG	25 mm Wedge DW258G	Alphawedge DA8G	Multiwedge DM28G	TR60 Wedge DTR8G	MF Wedge DMF8G	

* Stud available in M6, M8 or M10. Barrel available in M6 or M8. Please substitute the (*) for the size required when ordering, e.g - S6G for an M6 Stud.

3) Choose your wire length:
(Input the code in the blue area below)

1M	2M	3M	4M	5M	10M
-----------	-----------	-----------	-----------	-----------	------------

4) Enter your unique product code:

<input type="text"/>	<input type="text"/>	<input type="text"/>	<input type="text"/>	<input type="text"/>	<input type="text"/>	<input type="text"/>	<input type="text"/>	<input type="text"/>	<input type="text"/>	<input type="text"/>	<input type="text"/>	<input type="text"/>	<input type="text"/>	<input type="text"/>	<input type="text"/>	<input type="text"/>	<input type="text"/>	<input type="text"/>	<input type="text"/>
Section 1						Section 2						Section 3							

Example code: HF2-HG-2M (Standard Hanger Kit for 2 mm wire and 2 metres of wire)
For Black finished products add “BLK” to the end of the product code.

Installation Design Service

Submit your drawings and our technical team will provide a bespoke product specification based on your project requirements.
Call 0800 018 4264 for further information.

www.gripple.com
info@gripple.com

Gripple Ltd (Headquarters)

The Old West Gun Works
Savile Street East
Sheffield S4 7UQ
UK

T | +44 (0) 800 018 4264

F | +44 (0)114 275 1155

E | info@gripple.com

Gripple Inc

1611 Emily Lane
Aurora
IL 60502
USA

T | +1 866 474 7753

F | +1 800 654 0689

E | usinfo@gripple.com

Gripple Europe SARL

1, rue du commerce
BP 37
67211 Obernai Cedex
France

T | +33 (0)3 88 95 44 95

F | +33 (0)3 88 95 08 78

E | frinfo@gripple.com

Gripple India

B 95/2
Naraina Industrial Area
Phase I
New Delhi-110028

T | +91 11-40582703

F | +91 11-40582703

E | ininfo@gripple.com